

TECHNICAL NOTE – Presco features

Introduction

CS Technologies controllers work with the full range of Presco readers including keypads and cards. Some special features have been added to the firmware for the systems which allow more versatility in the use of the cards. These features include:

- the ability to deal with the full range of Presco card numbers (including those with embedded '*' and '#')
- the ability to ignore the '*' or '#' key if desired when embedded in the card number
- the ability to use a keypad with an elevator controller to select an individual relay to be triggered

Some presco cards are encoded in 'base 12' format, where the characters '*' and '#' form part of the card number. In earlier revisions of CS Technologies firmware and software these characters were either ignored or used as an indication that the user wanted to arm or disarm an associated alarm area.

However a new option has been added to the system to allow this information to be used as part of the card number. This will eliminate the annoyance of duplicated cards owing to the * and # characters being ignored.

Firmware and software revisions

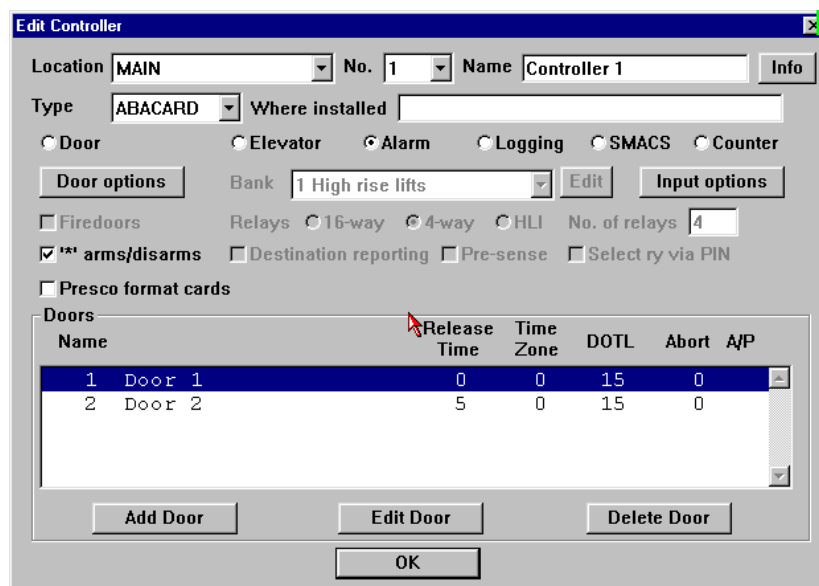
The features described in this document are available in firmware revisions as described below (or greater):

R2 presco door firmware	revision 384	PDN0384.CST
R2 presco door firmware (big chip)	revision 385	PDNB0385.CST
R2 presco door firmware (remote expiry)	revision 386	PDNR0386.CST
R2 presco lift firmware	revision 387	PLN0387.CST
R2 presco lift firmware (big chip)	revision 388	PLNB0388.CST
R2 presco alarm firmware	revision 389	PPN0389.CST
R2 presco alarm firmware (big chip)	revision 390	PPNB0390.CST
R3 presco door firmware	revision 391	PPN30391.CST
R3 presco door firmware (big chip)	revision 392	PPNB3392.CST

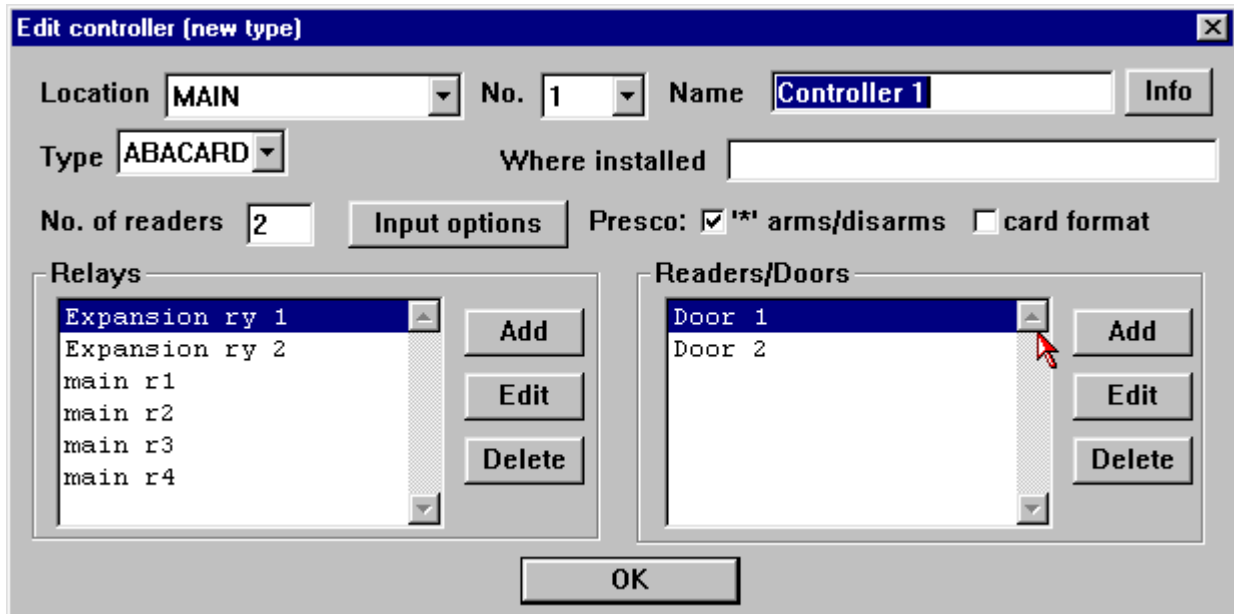
PC3 revision 166 or greater must be used to have these features.
 Advent revision 259 or greater must be used to have these features.

Setting up the system

Under Hardware/Controllers/Edit controller there is a new check box. This appears for both R3 and non-R3 firmware types.



The above screen (R2 and earlier firmware) shows the new checkbox 'Presco Format Cards' on the left hand side.

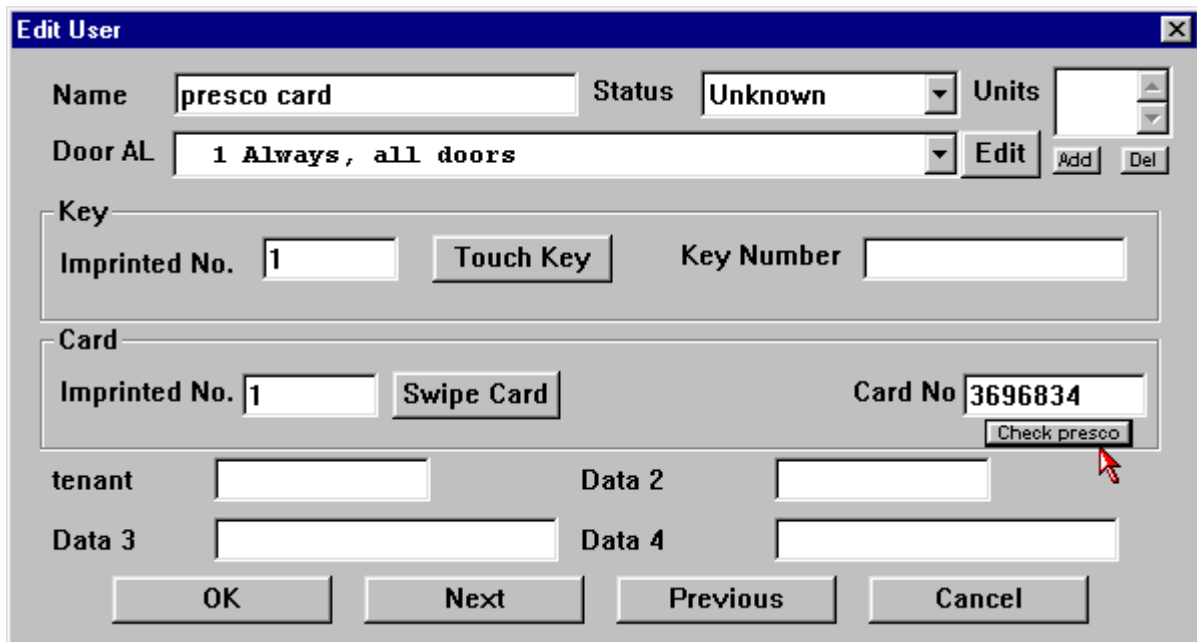


The above screen (R3 firmware) shows the 'card format' check box on the right hand side.

Both these checkboxes have the same functionality. If they are checked, then when any presco credential is used at a reader it will be interpreted as being in 'base 12' rather than the standard 'base 10'. Thus this box should be checked for presco cards or keyfobs, but not for presco PIN pads.

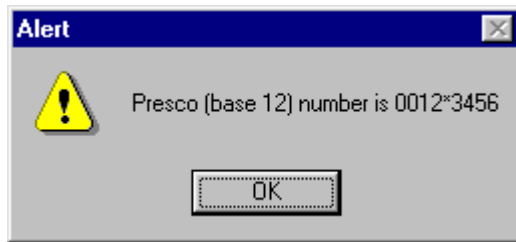
The user screen

When using Presco format (base 12) credentials the number on the card is converted to decimal for compatibility with the other card reader types used by CS Technologies equipment. It is not possible to directly enter the 'base 12' number into the card number field, and the cards must therefore be registered by presentation at a reader and the use of the 'swipe card' button. However a new button has been added underneath the card number, which allows a quick conversion back to presco format to verify the card number.



When the 'check presco' button is pressed, the decimal number shown in the 'card no' field will be converted to the standard presco presentation and this can be used to verify the presco number printed on the card.

The 'check presco' button only appears if at least one controller in the database has the 'presco card format' check box ticked. The dialog box below shows an example display – the decimal number 3696834 converts to 12*3456 in the Presco base-12 format.



Ignoring the '#' or '*'

Some versions of CS Technologies firmware use the presco interface with a keypad and use the keypad for access control as well as arming and disarming an area. When arming or disarming the user indicates that this is what they want to do by pressing '#' or '*' as part of the card number. This is a problem when using cards with embedded '#' or '*' characters as the system always thinks that the area is to be armed or disarmed when one of these credentials is used.

To get around this, a checkbox 'ignore presco *' has been added to the controller screens shown above. When this is ticked then the '#' or '*' characters embedded in the card number are ignored.

Note however that if the 'presco format' checkbox is ticked then the '#' and '*' characters form part of the card number so are ignored anyway.

Triggering individual relays

The final feature covered by this technical note is the ability to trigger individual relays when using the presco products with elevator firmware. If the 'select relay via pin' checkbox is ticked, then whenever a PIN is entered on the presco keypad the first digits of the number entered identify the user and the last digit identifies the relay (1-9) which the user wishes to trigger. For example if the PIN 1234 was in the system, then with this checkbox ticked the user could enter 12348 in order to trigger relay 8 only.

G:\My Documents\CS Technologies\Brochures\Tech note re presco.doc