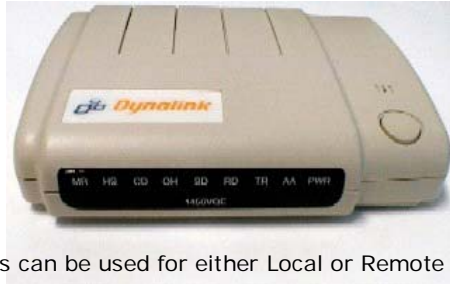


# DYNALINK 56k e Modem II (1456VQE-C2 EXTERNAL)



The Modems can be used for either Local or Remote connection:

## LOCAL MODEM

The Local Modem needs to be connected to the Serial port of the PC. Please refer to the Dynalink manufacturers install guide for installation.

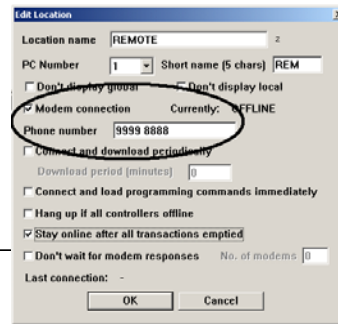
The local PC3/Advent configuration string should be set to **&D0&K0\N1%CO&U1\*I4EO**

The remote phone number is entered into PC3 or Advent as shown below.

PC3: (Technician/Site)



Advent: (Hardware/Locations)



## REMOTE MODEM

The Remote Modem has been pre configured with the following AT commands using Hyper Terminal (note you do not need to reconfigure the modem)

1. Reset to Factory Settings **AT&F**
2. Ignore the DTR Signal **AT&D0**
3. Ignore the RTS signal **AT&K0**
4. Set to Asynchronous mode **AT&Q0**
5. Set to Direct Mode **AT\N1**
6. Disable Data Compression **AT%CO**
7. Auto Answer on First Ring **ATSO=1**
8. Set to V.34 mode **AT&U1**
9. Set the Baud Rate to 9600 **AT\*I4** (Older modem commands may be **ATS37=9**)
10. Turn the Echo of Commands off **ATE0**
11. Write the Active Profile to Memory **AT&W**

Simply connect the Remote modem to the RS232 to RS485 comms using the included 'modem to comms convertor cable'.

