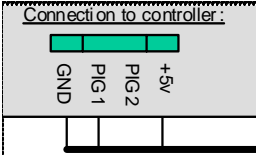
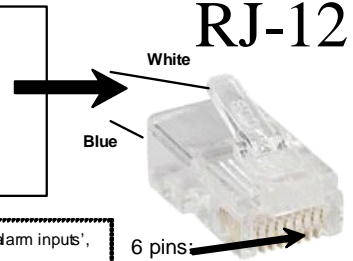


White = InX (PIG1)
 Black = GND
 Red = +5V
 Green = GND
 Yellow = +12V (only needed for pig3)
 Blue = GND

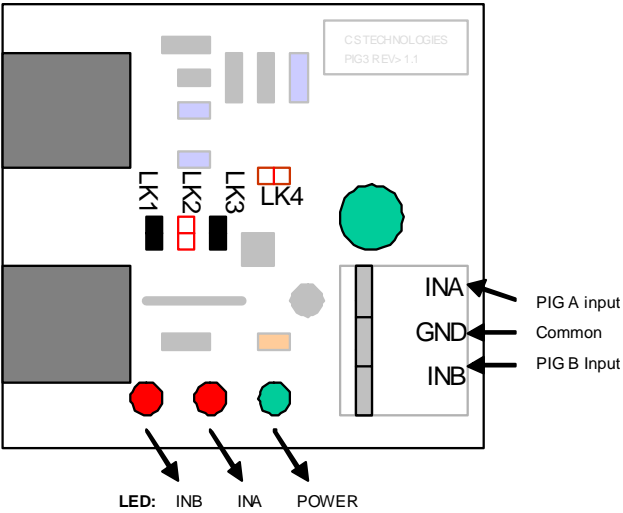


White = InX (PIG1) – this is the PIG data line
 Black = GND
 Red = +5V
 Green = GND
 Yellow = +12V (connect to DC power supply if using 'Pig relay', otherwise do not connect to anything).
 Blue = GND

NOTE: PIG inputs can be used for 'Exit Request Inputs', 'Door Monitoring', 'Alarm inputs', 'Arming points' etc.

PIG-2

TWO INPUTS: (INA, INB)



Add PIG inputs using the CALCULATE button



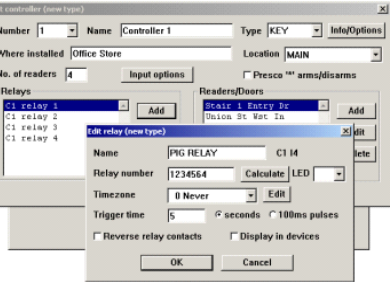
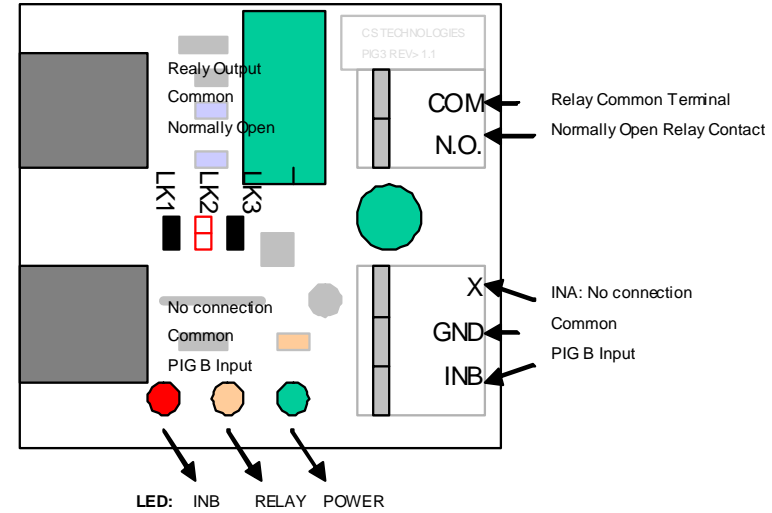
Enter the PIG number and select which port A or B the input is.

NOTE: LK1 & LK3 are always on only!!!

PIG-3

ONE OUTPUT RELAY: (A);

ONE INPUT: (INB)



Define PIG relays in the controller setup window.

Note: PIG relays require R3 – 'programmable relays' firmware.