

## WHAT IS THE TCD ALARM INTERFACE?

The TCD alarm interface is a dual path communication device (GPRS and TCP/IP) to send alarm signals to the 24hr response centre – ensuring all alarms get through.

The TCD unit uses **outbound TCP/IP connections only** (port range 18000 to 18049) . It works together with a GPRS connection to establish a secure connection with the response centre. (If no TCP/IP connection is possible it can work in GPRS only mode).

The Evolution Controller controls the Alarms and alarm inputs. When connected to the TCD unit it sends alarm messages and continually communicates with the TCD unit using the industry standard Serial Interface Protocol (SIP). Alarm inputs can be over multiple Evolution controllers. The EVO controller that connects to the TCD unit is known as the 'master' controller.

The TCD includes a ready to go Telstra GSM SIM card. SIM Plans are included with the Monitoring Companies Fees, so there is no need to provide your own sim card).

### CONNECTION (3 WIRES):

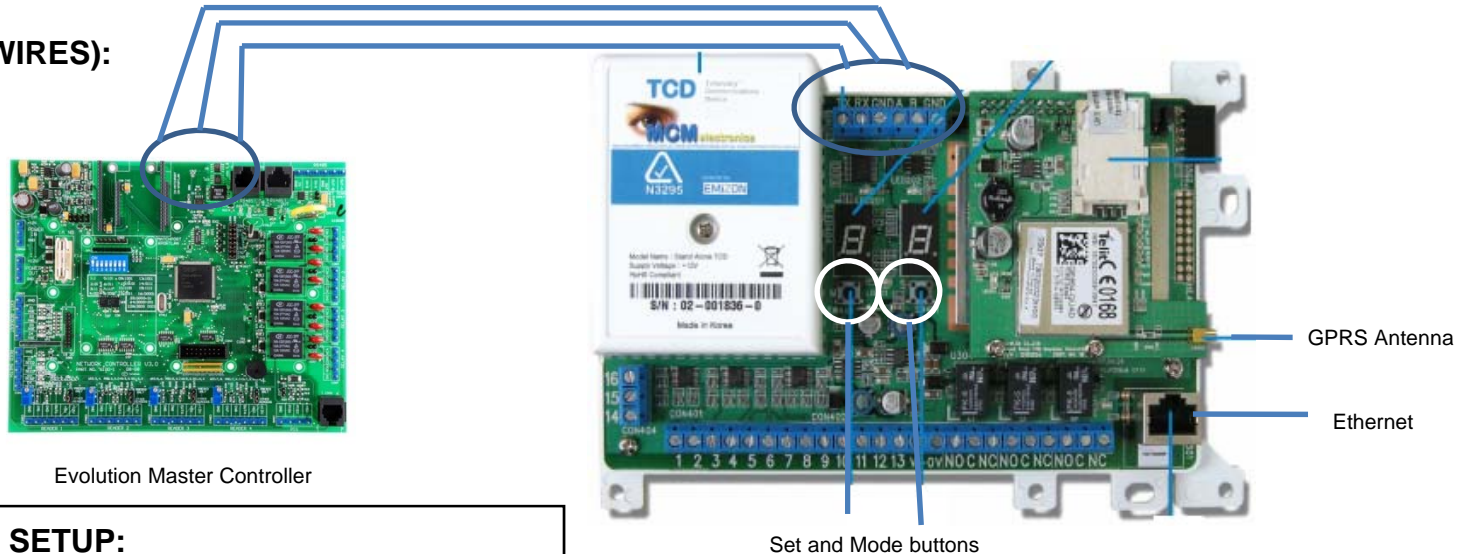
To connect the TCD unit to the Evolution controller

Use 3 wires

RX <-> TX

TX <-> RX

GND <-> GND



Evolution Master Controller

### 1. EVO SOFTWARE SETUP:

First add the Areas and Alarm inputs into the Evolution software ('Hardware/Alarms').

To enable the TCD unit go to:

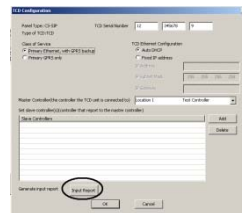
'Hardware/Alarms/Monitoring Centre Setup'

Select 'Add TCD Unit'.

Enter

- TCD Serial Number
- Class of Service - Dual or GPRS only
- Ethernet Configuration (if required) – Auto DHCP or Fixed IP address
- Assign the MASTER controller - the controller that will be connected to the TCD unit.
- Assign any SLAVE controller(s) – Evo controllers that have alarms but are not directly connected to the TCD unit.

**Print out the INPUT report.** The input report has all the details that the monitoring company will ask you such as serial number, panel type and the zone naming.



### 2. CONNECT TCD UNIT AND CALL MONITORING CENTRE:

• Connect the EVO board , GPRS antenna, Ethernet Connection & 12 Volts DC power to the TCD unit. Additionally for sites with firewalls ensure the sites router has the ports 18000 to 18049 unblocked.

• Contact your Monitoring Centre to activate the service.

- Use the Evolution Input Report to give the Monitoring Company the required details. The report is designed to answer the setup questions that the Monitoring Company will ask.

• The Monitoring company will then step you through the process of activating the TCD unit. (They ask you to hold down the Set and Mode buttons for about 8 seconds).

• The service is now ready for testing.